

FRTM Series

Light Commercial Oil-Fired Steel Water Boiler



New Yorker[®]
RESIDENTIAL HEATING BOILERS

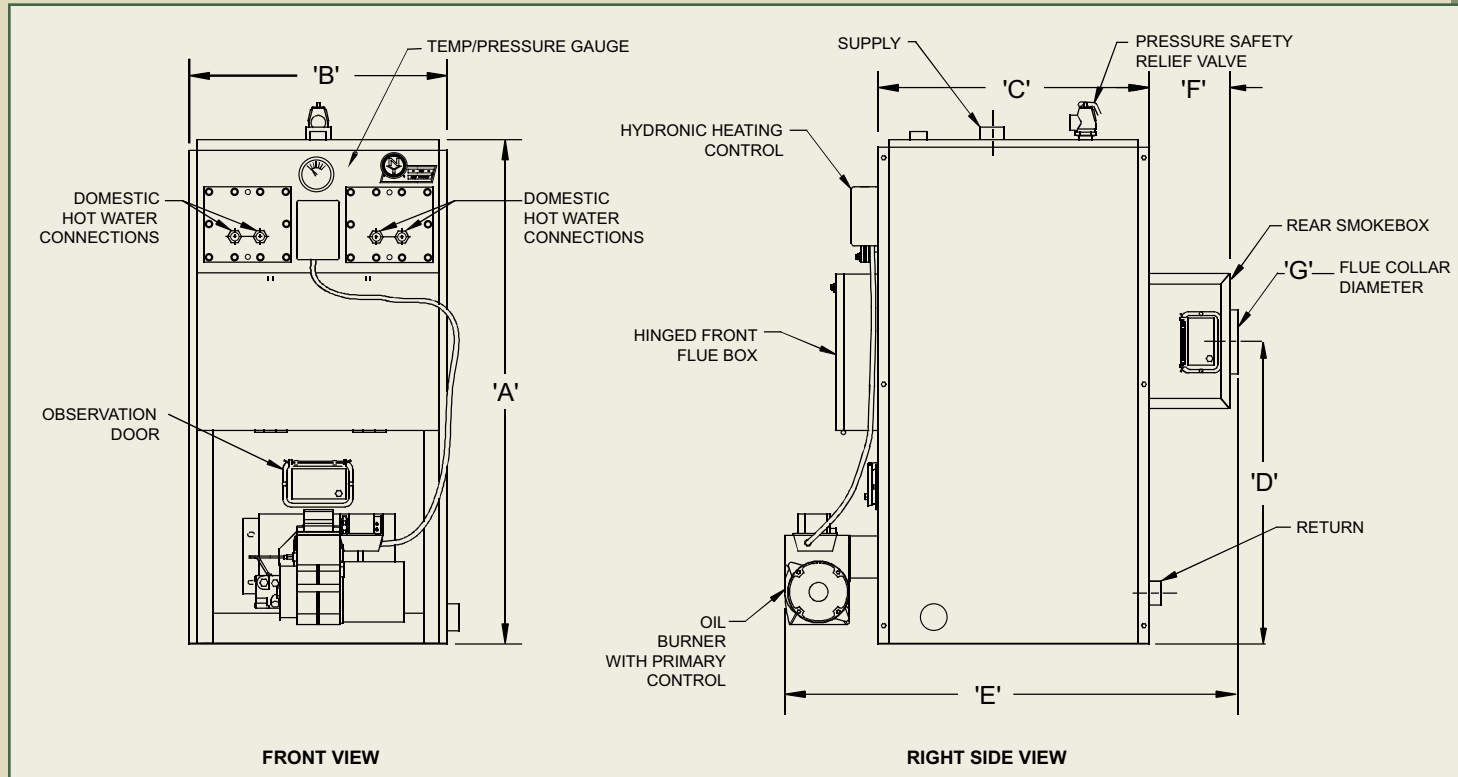
Available with Dual Coils

Ratings & Specifications

Model	FR-265-W	FR305-W	FR-350-W	FR-400-W	FR-462-W
DOE Heating Capacity MBH	N/A	N/A	N/A	N/A	N/A
Gross IBR Output MBH	265	305	350	400	465
Net IBR Output MBH	230	265	304	348	402
IBR Firing Rate (gal./hr.)	2.40	2.75	3.00	3.50	4.00
Nozzle Specification	80°S	80°S	80°S	80°S	80°S
Stack Diameter	8	8	10	10	10
Number of Tubes	24	24	33	33	33
Boiler Water Capacity (gal.)	52	52	70	70	80
Supply Size (dia.)	3	3	3	3	3
Return Size (dia.)	2	2	3	3	3
Tankless Heater	5	5	5	5	5
Size (gal./min.)	4-6 Optional	4-6 Optional	4-6 Optional Dual Coils Avail.	4-6 Optional Dual Coils Avail.	4-6 Optional Dual Coils Avail.
Chimney Size (min.)	8" x 12" x 15'	8" x 12" x 18'	8" x 12" x 20'	12" x 12" x 20'	12" x 12" x 25'
Approx. Shipping Weight (lbs.)	900	900	1100	1100	1200
Jacket Height - 'A'	51-1/8	51-1/8	58	58	58
Jacket Width - 'B'	21-7/8	21-7/8	25-7/8	25-7/8	25-7/8
Jacket Depth - 'C'	25-7/8	25-7/8	27-7/8	27-7/8	33-7/8
Smoke Outlet Height - 'D'	34	34	35-3/4	35-3/4	35-3/4
Overall Depth - 'E'	38-3/4	38-3/4	40-7/8	40-7/8	46-3/4
Smokebox Depth - 'F'	6-1/8	6-1/8	6-1/8	6-1/8	6-1/8
Flue Collar O.D. - 'G'	7-7/8	7-7/8	9-7/8	9-7/8	9-7/8

IBR firing rates based on 140,000 BTU/gal. oil.
 IBR net water ratings based on allowance of 1.15
 Manufacturer should be consulted before selecting a boiler
 for installations having unusual piping and pick-up requirements.

Firebox draft setting: -.02 inches water column
 Ratings based on 12.2% CO₂



© 2006 New Yorker Boiler Company, Inc.
 Hatfield, PA
 (215) 855-8055
 www.newyorkerboiler.com
 PL81420041002-9/06-2.5Ms

